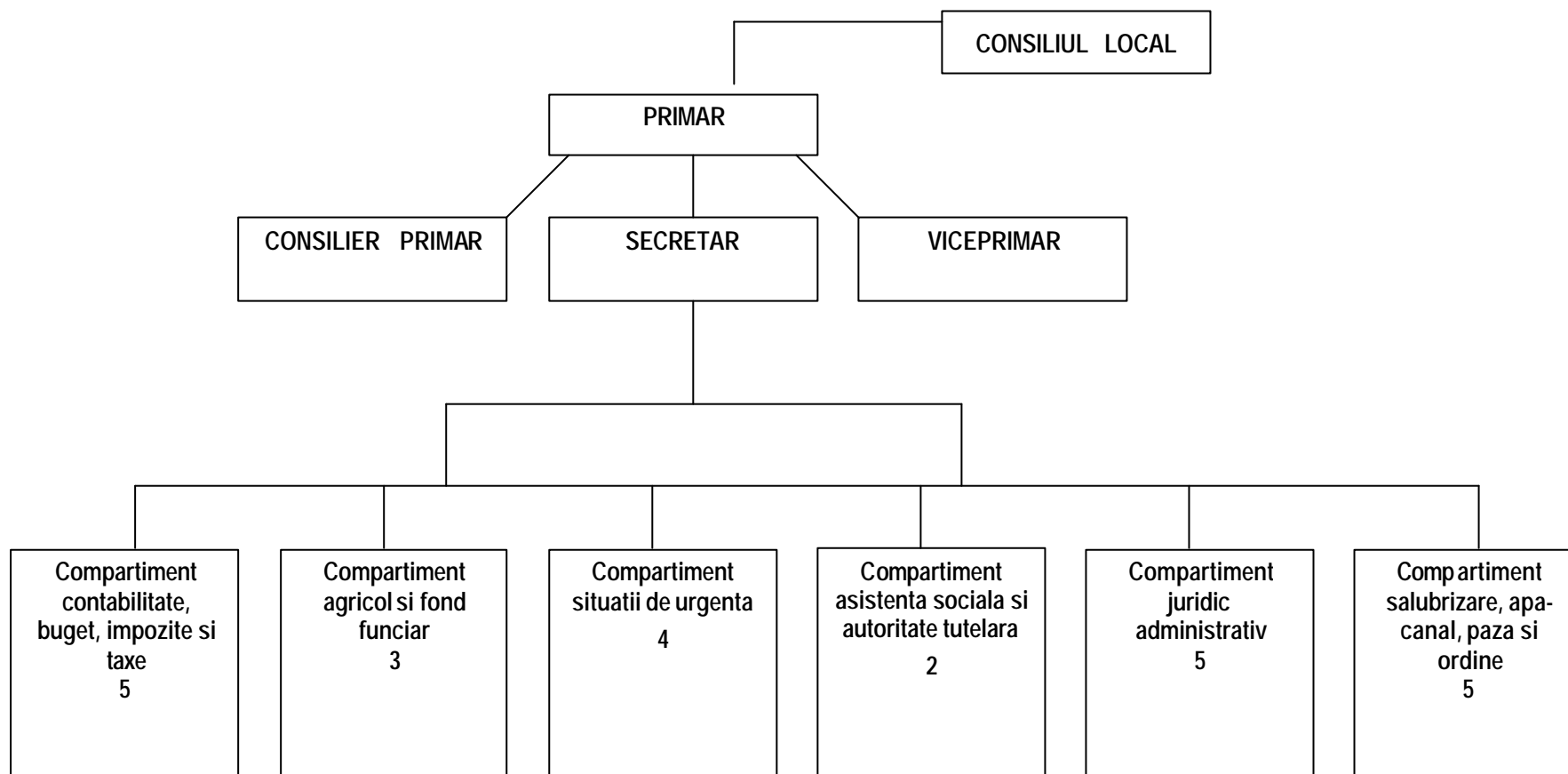


ORGANIGRAMA



LEGENDA:

TOTAL POSTURI: 28
FUNCTII PUBLICE: 10
CONTRACTUALI: 16

TOTAL POSTURI PRIMARIE:

NUMAR TOTAL 28
DIN CARE: DEMNITARI 2
FUNCTII PUBLICE DE CONDUCERE 1
FUNCTII PUBLICE DE EXECUTIE 9
CONTRACTUALI DE CONDUCERE 0
CONTRACTUALI DE EXECUTIE 16

<u>TOTAL POSTURI</u>	<u>28</u>
<u>TOTAL POSTURI CONFORM OUG 63/2010</u>	<u>30</u>
<u>POSTURI VACANTE</u>	<u>8</u>
<u>EXCEPTATE DE LA OUG 63/2010</u>	<u>14</u> DIN CARE:
- ASISTENTI PERSONALI	12
- ASISTENT MEDICAL GENERALIST PRINCIPAL	1
-MUNCITOR NECALIFICAT LEGEA 76	1

Primar,
Ing. Vasile Berariu